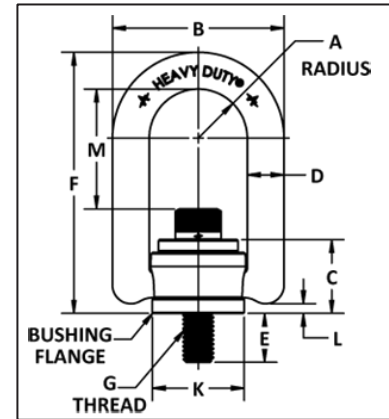


## HOIST RINGS

### Forged Center-Pull Hoist Rings

Forged hoist rings are ideal for OEM and industrial use.

- Forged high strength 4140 alloy steel.
- Swivels 360° and pivots 180° under load.
- Meets manufacturing and design requirements of ASME-B30.26 and MIL-STD 209.
- Magnetic particle inspected per ASTM 1444.
- Each hoist ring is individually serialized.
- Black oxide finish for corrosion resistance.
- Design Factor 5:1.



Center-Pull Hoist Rings (Dimensions in inches)													
Part Number	Load Capacity* (lbs.)	G Thread	A	B	C	D	E (+/- .12)	F	K	L	M	Torque** (ft.-lbs.)	Weight (lbs.)
23906	800	5/16-18	0.65	2.29	0.96	0.44	0.56	3.23	1.25	0.15	1.51	7	0.52
23907	800	5/16-18	0.65	2.29	0.96	0.44	1.06	3.23	1.25	0.15	1.51	7	0.54
23908	1,000	3/8-16	0.65	2.29	0.96	0.44	0.56	3.23	1.25	0.15	1.45	12	0.56
23909	1,000	3/8-16	0.65	2.29	0.96	0.44	1.06	3.23	1.25	0.15	1.45	12	0.58
23910	2,500	1/2-13	1.00	3.50	1.50	0.75	0.75	5.31	1.89	0.17	2.56	28	1.71
23911	2,500	1/2-13	1.00	3.50	1.50	0.75	1.00	5.31	1.89	0.17	2.56	28	1.72
23914	4,000	5/8-11	1.00	3.50	1.50	0.75	1.00	5.31	1.89	0.17	2.44	60	1.78
23915	4,000	5/8-11	1.00	3.50	1.50	0.75	1.25	5.31	1.89	0.17	2.44	60	1.88
23917	5,000	3/4-10	1.00	3.50	1.50	0.75	1.00	5.31	1.89	0.17	2.31	100	1.89
23918	5,000	3/4-10	1.00	3.50	1.50	0.75	1.50	5.31	1.89	0.17	2.31	100	2.02
23926	10,000	1-8	1.50	5.10	2.05	1.00	1.45	7.37	2.81	0.18	3.20	230	7.57
23927	10,000	1-8	1.50	5.10	2.05	1.00	2.20	7.37	2.81	0.18	3.20	230	7.81
23929	15,000	1 1/4-7	2.00	6.75	2.87	1.25	1.88	9.22	3.88	0.18	3.74	470	15.7
23930	15,000	1 1/4-7	2.00	6.75	2.87	1.25	2.63	9.22	3.88	0.18	3.74	470	16.0
23933	24,000	1 1/2-6	2.00	6.75	2.87	1.25	2.63	9.22	3.88	0.32	3.49	800	18.1
23935	30,000	2-4 1/2	2.00	6.75	2.87	1.25	2.96	9.22	3.88	0.32	3.49	1100	22.9

Metric Center-Pull Hoist Rings (Dimensions in millimeters)													
Part Number	Load Capacity* (kgs.)	G Thread	A	B	C	D	E (+/- .12)	F	K	L	M	Torque** (Nm)	Weight (kg.)
23956	400	M8 x 1.25	16.5	58.2	24.4	11.1	16	82.0	31.8	4.0	38.5	9.5	0.24
23958	450	M10 x 1.50	16.5	58.2	24.4	11.1	16	82.0	31.8	4.0	36.5	16	0.25
23962	1,050	M12 x 1.75	25.4	88.9	38.1	19.1	25	134.9	48.0	4.4	65.0	37	0.78
23965	1,900	M16 x 2.0	25.4	88.9	38.1	19.1	25	134.9	48.0	4.4	62.0	80	0.81
23968	2,200	M20 x 2.5	25.4	88.9	38.1	19.1	25	134.6	48.0	4.4	58.7	135	0.86
23974	4,200	M24 x 3.0	35.6	129.5	52.1	25.4	28	187.2	71.4	4.6	85.7	311	3.29
23975	4,200	M24 x 3.0	35.6	129.5	52.1	25.4	38	234.2	71.4	4.6	85.7	311	3.30
23979	7,000	M30 x 3.5	50.8	171.5	72.9	31.8	67	234.2	98.5	8.2	95.0	637.2	7.26
23982	11,000	M36 x 4.0	50.8	171.5	72.9	31.8	67	234.2	98.5	8.2	88.6	1085.5	8.21
23985	12,500	M42 x 4.5	50.8	171.5	72.9	31.8	80	234.2	98.5	8.2	88.6	1085.5	10.14
23986	13,500	M48 x 5.0	50.8	171.5	72.9	31.8	80	234.2	98.5	8.2	88.6	1085.5	10.59

All dimensions approximate. Variations do not affect use or design factor.

\*\* It is recommended that these torques be used when installing hoist rings.

\*



Do not exceed rated capacities. Be sure that sling tension does not exceed hoist ring capacity. Follow instructions for Effect of Angle in HELP section of this catalog.